

NAKAYAMA[®]

PRO

Li-ion
FORCE
21V



100+
TOOLS

DRIVEN BY
JAPANESE
TECHNOLOGY
SINCE 1975



NAKAYAMA[®]

PRO

With 40 years of experience, **NAKAYAMA PRO** is a European brand driven by **Japanese Technology** and inspired by a commitment to precision, durability and performance. Our mission is to deliver reliable garden tools and accessories designed for professionals and demanding users.

Our range includes **1,500** products, each certified by **TÜV NORD GERMANY** to ensure maximum safety and outstanding performance. Today, **NAKAYAMA PRO** products are trusted in **60 countries** across 4 continents, supported by **30,000 sq.m.** of warehouse facilities.

As a complete one-stop shop, we offer a full range of garden solutions, reliable after-sales service and a comprehensive selection of spare parts. With a strong customer-first philosophy and continuous development, **NAKAYAMA PRO** remains a trusted partner for professional gardening needs.

Join our global network and experience the power of European quality.



1.500
PRODUCTS



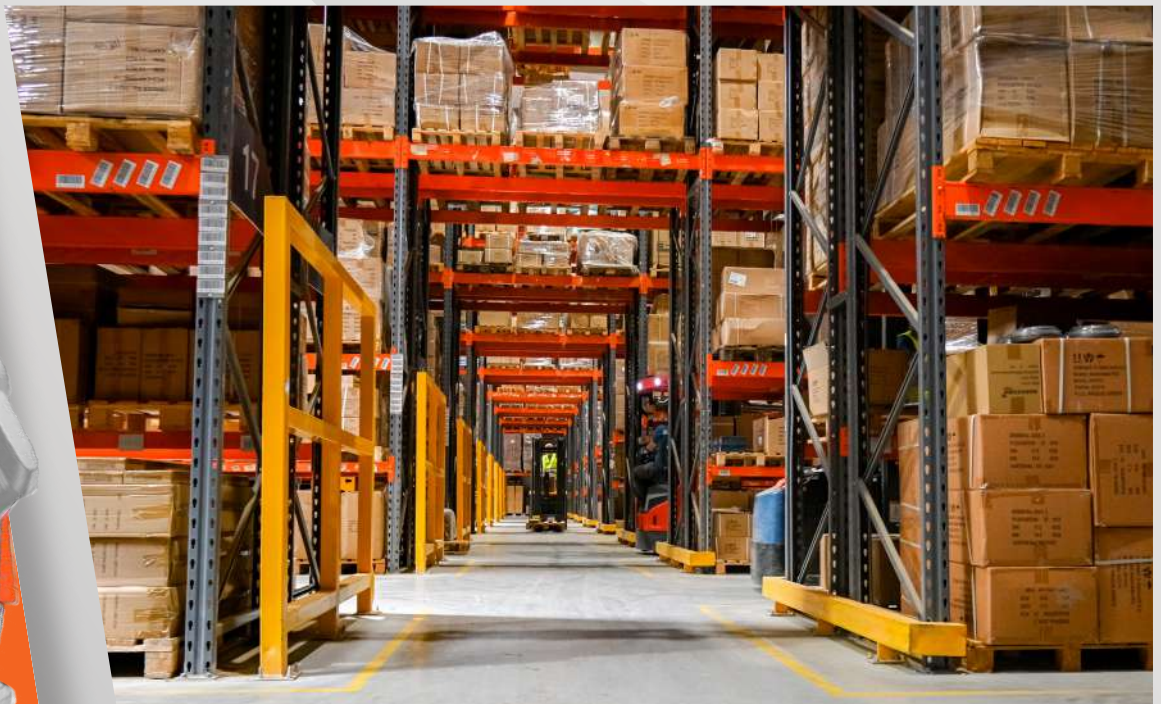
30.000sqm
TOTAL WAREHOUSE

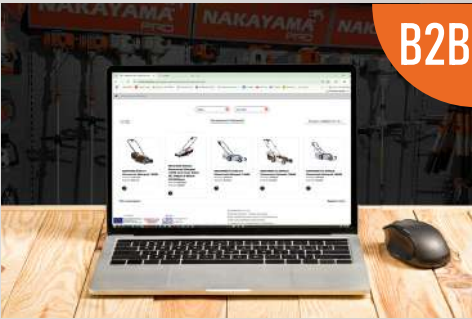


22.000
SPARE PARTS



60
COUNTRIES
OF EXPORTS





B2B

- Ensure stable sales through long-term partnerships.
- Availability of detailed product data logs.
- Presentation of new manual tools product line.
- Support for partners with comprehensive informational material (print & digital).
- Continuous content updates with new presentations.



CERTIFIED
by TÜV NORD GERMANY



SCAN HERE

AND TAKE A TOUR
TO OUR FACILITIES

CONTENTS



▶ Cordless tools

p. 5-16



▶ Brush cutters
▶ Pole saws

p. 17-20



▶ Chainsaws

p. 21-22



▶ Lawnmover
▶ Grass chopper

p. 23-25



▶ Chipper shredder

p. 26



▶ Tillers
▶ Motor cultivators
▶ Trailers

p. 27-31



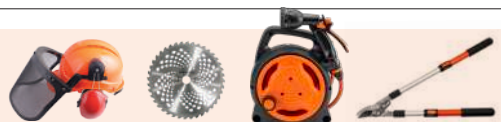
▶ Augers
▶ Blowers
▶ Trimmers

p. 32-33



▶ Pumps
▶ Sprayers

p. 34-39



▶ HANDTOOLS - ACCESSORIES

p. 40-59





BRUSHLESS MOTOR



PRUNING COMBO

SK5 STEEL

EC1221X44T3C | 085492

Set cordless chainsaw and pruning shear

Chainsaw

Guide bar	20cm
Chain/guide	1/4"x1,1mm/46
Chain speed	8m/s
Lubrication system	Automatic pump
Weight	1.4kg

INCLUDE: Extra chain, charger, tools, protection glasses

Pruning shear

Cutting capacity (2 positions)	0-22/28mm
Display	HD Digitale
Weight	0.75kg

Extension

Length	1.2-1.9m
Weight	1.0kg

INCLUDE: 2x2.0Ah, 1.5A charger, Safety Switch, 10ml oil bottle (without oil), HEX wrench, socket



+OFFER
the Extension



BRUSHLESS MOTOR



EC1040 | 082453

Cordless mini chainsaw

Guide bar	10cm
Chain/guide	1/4" 1,1mm/28
Chain speed	10m/s
Weight	0.815kg

INCLUDE: Extra chain, charger, tools, protection glasses



BRUSHLESS MOTOR



EC1050 | 075028

Cordless mini chainsaw

Guide bar	15cm
Chain/guide	1/4"x1,1mm/37
Chain speed	10m/s
Weight	0.825kg

INCLUDE: Extra chain, charger, tools, protection glasses





BRUSHLESS MOTOR



VIDEO



EC1100

EC1100 | 074991
Cordless mini chainsaw

Guide bar	15cm
Chain/guide	1/4"x1,1mm/37
Chain speed	10m/s
Lubrication system	With pump
Weight	1,1Kg

INCLUDE: Extra chain, charger, tools, protection glasses



BRUSHLESS MOTOR



VIDEO



EC1200

EC1200 | 075004
Cordless mini chainsaw

Guide bar	20cm
Chain/guide	1/4"x1,1mm/46
Chain speed	10m/s
Lubrication system	Automatic pump
Weight	1.4Kg

INCLUDE: Extra chain, charger, tools, protection glasses



BRUSHLESS MOTOR



PRO

VIDEO



EC1520

EC1520 | 082927
Cordless mini chainsaw

Guide bar	20cm
Chain/guide	1/4x1,1mm/47
Chain speed	11m/s
Lubrication system	Automatic pump
Weight	1.5Kg

INCLUDE: Charger, tools



BRUSHLESS MOTOR



PRO

VIDEO



EC1230

EC1230 | 082996
Cordless mini chainsaw

Guide bar	30cm
Chain/guide	1/4" 1,1mm/62
Chain speed	14m/s
Lubrication system	Automatic pump
Weight	1.55 kg

INCLUDE: Extra chain, charger, tools, protection glasses





NEW

EC1740X22T3 | 086185
Cordless garden combo, blower, hedge trimmer, brushcutter

Leaf blower

Maximum Air Volume	245 m³/min
Maximum Air Speed	241Km/h
Load speed	11000/13500rpm
Weight	1.1kg

Hedge trimmer

Load speed	1550spm
Guide bar	46cm
Cutting Length	44cm
Cutting Capacity	16mm
Rotating Handle	0/±45/±90°
Protective Guard	
Weight	2.2kg

Brushcutter

Cutting Width	300mm
Load speed	8000rpm
Telescopic Shaft	487 - 890mm
With adjustable guard, rotating head from 0° to 90°	
Weight	1.7Kg



Rotating Handle



NEW

EC1660X4CA | 086307
Cordless washer

Maximum Pressure	30bar
Water Flow Rate	300lt/h
Operating Time	16'
6 Settings nozzle	
Weight	1,1Kg

INCLUDE: 1x5m water hose quick-connect nozzle head with 6 spray settings, water inlet filter, 1/2" quick connector, lance extension, detergent tank 4.0 Ah battery, 2A charger





SK5 STEEL



NEW

Rotating handle



EC1750X24T4 | 086277
Cordless garden combo, blower, brushcutter, pruning shear, hedge trimmer

Leaf blower

Air Volume	570 m ³ /n
Air Speed	144Km/h
Load speed	13000/16000rpm
Switch with Safety Lock	
Weight	2.1kg

Pruning shear

Cutting capacity	0-28mm
Display	HD Digital
Weight	0.75Kg

Brushcutter

Disk Diameter	300mm
Load speed	8000rpm
Split Shaft / Telescopic	487 - 890mm
With adjustable guard, rotating head from 0° to 90°	
Weight	1.7Kg

Hedge trimmer

Load speed	1550spm
Guide bar	46cm
Cutting Length	44cm
Cutting Capacity	16mm
Rotating Handle	0/±45/±90°
Protective Guard	
Weight	2.2kg



PRO

BRUSHLESS

MOTOR



EC1615 | 083092

Telescopic pole saw

Blade Length	20cm
Chain-Guides/Links	1/4x1,1mm /47
Chain Speed	10m/s
Lubrication system	Automatic pump
Reciprocating Saw	180,0-300,0cm
Weight	2.7kg



PRO

BRUSHLESS

MOTOR

SOLO



EC1620 | 078043

Telescopic pole saw

Blade Length	20cm
Chain-Guides/Links	1/4x1,1mm/48
Chain Speed	8m/s
Lubrication system	Automatic pump
Reciprocating Saw	150,0-300,0cm
Weight	2.4Kg



PRO

BRUSHLESS

MOTOR

SK5 STEEL

SOLO

THE
LIGHTEST
IN THEIR
CLASS



EC1630 | 079026

Extension pruner

Cutting Diameter (2STEPS)	0-22/0-35mm
Height	2,2m
Weight	1.9Kg

PRO

EC1605 | 071723

Connecting wire for batteries for EC1600



PRO

EC1505 | 071525

Work fanny pack





BRUSHLESS MOTOR

PRO



EC1600 | 061694

Cordless chainsaw

Guide bar	20cm
Chain/guide	1/4x1,1mm/47
Chain speed	15m/s
Lubrication system	Automatic pump
Weight	1,5Kg

INCLUDE: Charger, tools



BRUSHLESS MOTOR

PRO

42V(21+21)



NEW

EC1711X44 | 085294

Cordless chainsaw

Guide bar	40cm(16")
Chain/guide	3/8LP", 1.1mm/57
Chain speed	15/25 m/s
Selection keypad	2 speeds
Lubrication system	Automatic pump
Chain tensioner	
Weight	3.8Kg

INCLUDE: 4A Dual fast-charger, tools





BRUSHLESS MOTOR

PRO

42V(21+21)



NEW

EC4611x44 | 086406

Brush cutter

Trimmer Line Diameter	300mm
Split Shaft	
Speed	5500-7500rpm
Shaft Diameter	26mm
Weight	6.2Kg

INCLUDE: Disc 3T, nylon line, belt



Telescopic extension rod

MODEL	EC1020	EC1525
CODE	075011	085256
Length	1,2-1,9m	1,3-2,5m
Weight	1Kg	1.4Kg



PRO

NEW



EC1651x4 | 086390

Hedge trimmer

Load speed	1550spm
Bar Length	46cm
Cutting Capacity	16mm
Rotate Handle	0/±45/±90°
Weight	2.2kg



BRUSHLESS
MOTOR

SK5 STEEL

VIDEO



EC1250



EC1250 | 075035

Cordless pruning shears

Cutting capacity (2 positions)	0-22/28mm
Display	HD Digital
Weight	0.75Kg

INCLUDE: Charger, tools



PRO



BRUSHLESS
MOTOR

SK5 STEEL

VIDEO



EC1435



EC1435 | 082903

Cordless pruning shears

Cutting capacity (2 positions)	0-15/35mm
Progressive cutting	
Display	HD Digital
Weight	0.85Kg

INCLUDE: Charger, tools



PRO



BRUSHLESS
MOTOR

SK5 STEEL

VIDEO



EC1440



EC1440 | 082910

Cordless pruning shears

Cutting capacity (2 positions)	0-15/40mm
Progressive cutting	
Display	HD Digital
Weight	0.9Kg

INCLUDE: Charger, tools





PRO



EC1641X4 | 086383
Cordless blower

Air Volume	570m ³ /h
Air Speed	144km/h
Load speed	13000-16000rpm
Weight	2.1kg

INCLUDE: Charger

NEW



BRUSHLESS
MOTOR



PRO

42V(21+21)

4+1
TURBO



EC1719X44 | 085331
Cordless mini chainsaw

Air Volume	1020 m ³ /h
Air Speed	240Km/h
Speed options	4+1 Turbo
Load speed	9000-23000rpm
Weight	3.1kg

INCLUDE: 4A Dual fast-charger,
double hook strap

NEW



BRUSHLESS
MOTOR



PRO

42V(21+21)

4+1
TURBO



EC1715X44 | 085317
Cordless blower vacuum cleaner

Air Volume	650 m ³ /h
Air Speed	240Km/h
Speed options	4+1 Turbo
Load speed	17000rpm
Collection Bag Capacity	45Lt
Weight	3.4kg

INCLUDE: 4A Dual fast-charger,
single harness, collection bag

NEW



BRUSHLESS
MOTOR



PRO

42V(21+21)

4+1
TURBO



EC1723X44 | 085379
Cordless blower

Air Volume	1100m ³ /h
Air Speed	252 Km/h
Speed options	4+1 Turbo
Load speed	9000-23000rpm
Weight	5.6Kg

INCLUDE: 4A Dual fast-charger

NEW



BRUSHLESS MOTOR



PRO

42V(21+21)

NEW



EC1726X44 | 085393

Cordless lawn mower

Cutting width	43cm
Cutting height	2.5-7.5cm
Load speed	3300rpm
Basket volume	50Lt
Wheel size front/rear(Φ)	180/250mm
Deck	Plastic
Mulching, rear bag and side discharge	
Weight	13.8Kg

INCLUDE: 4A Dual fast-charger



BRUSHLESS MOTOR



PRO

42V(21+21)

NEW



EC1730X44 | 085416

Cordless lawn mower

Cutting width	47cm
Cutting height	3.0-7.5cm
Load speed	3300rpm
Basket volume	65Lt
Wheel size front/rear(Φ)	200/280mm
Deck	Steel
Mulching, rear bag and side discharge	
Weight	26.3Kg

INCLUDE: 4A Dual fast-charger



ALL 21V TOOLS HAVE A COMMON BATTERY CONNECTOR



EC1631 | 079033

Charger 1,5A

For EC1600, EC1620, EC1630



EC1201 | 075776

Battery 2Ah

For EC1050, EC1100, EC1200, EC1250



EC1101 | 075042

Battery 4Ah

For EC1600, EC1620, EC1630



EC1102 | 075783

Charger 1A

For EC1050, EC1100, EC1200, EC1250

CHARGING INDICATOR LIGHT

EC1608 | 078074

Battery (backpack)
20Ah

For EC1600, EC1620, EC1630



EC1609 | 078081

Charger 3A

For EC1608



16.8V 

BRUSHLESS MOTOR

1x 2.0Ah 

PRO

EC1500 | 053101
Cordless mini chainsaw

Guide bar	13cm
Chain/guide	1/4" 1,1mm/32
Chain speed	11m/s
Lubrication system	With pump
Weight	0,74Kg
LED battery Indicator	

INCLUDE: Charger, tools

WATCH VIDEO  EC1500




16.8V 

BRUSHLESS MOTOR

1x 2.0Ah 

SK5 STEEL

PRO

EC1350 | 055648
Cordless pruning shears

Cutting capacity (2 positions)	0-25/0-32mm
Progressive cutting	
Weight	0,74Kg
LED battery Indicator	

INCLUDE: Charger, tools

VIDEO  EC1350




PRO

EC1501 | 053118
Battery 16,8V
For EC1500/EC1350



PRO

EC1500EXT | 065227
Telescopic extension bar 1,5-2,1m
For EC1500 & EC1350



PRO

EC1503 | 073994
Connection wire
For EC1350 & EC1500



BRUSHLESS MOTOR

1x 2.0Ah 

PRO

EC1550 | 055655
Cordless mini chainsaw

Guide bar	20cm
Chain/guide	1/4" 1,1mm/48
Chain speed	11m/s
Lubrication system	With pump
Weight	1,5Kg
LED battery Indicator	

INCLUDE: Charger, tools




BRUSHLESS MOTOR

1x 2.0Ah 

SK5 STEEL

PRO

EC1400 | 053088
Cordless pruning shears

Cutting capacity (2 positions)	0-30/40mm
Progressive cutting	
Display	HD Digital
Weight	0,97Kg

INCLUDE: Charger, tools




PRO

EC1405 | 073987
Connection wire
For EC1400



PRO

EC1401 | 053095
Battery 21V
For EC1400/EC1550



PRO

EC1402 | 055662
Battery 21V
For EC1550/EC1400



16.8V 

BRUSHLESS MOTOR

2x 2.0Ah 

PRO

EC1510 | 077411
Cordless mini chainsaw

Guide bar	15cm
Chain/guide	1/4", 1,1/36mm
Chain speed	8m/s
Lubrication system	Automatic pump
Weight	0,96Kg
LED battery Indicator	

INCLUDE: Charger, tools




16.8V 

BRUSHLESS MOTOR

1x 2.0Ah 

SK5 STEEL

PRO

EC1300 | 053064
Cordless mini chainsaw

Cutting capacity (2 positions)	0-22/0-28mm
Weight	0.69Kg

INCLUDE: Charger, tools

VIDEO

EC1300




PRO

EC1510EXT | 077459
Telescopic extension bar 1,5-2,1m
For EC1510



PRO

EC1301 | 053071
Battery 16.8V, 2.0Ah
For EC1300, EC1510



16.8V 

BRUSHLESS MOTOR

2x 2.0Ah 

SK5 STEEL

NEW 

PRO

EC1428 | 084969
Cordless pruning shears

Cutting capacity (2 positions)	0-22/28mm
Progressive cutting	
Weight	0.69Kg

INCLUDE: Charger, tools




20V

BRUSHLESS MOTOR

SOLO

PRO

VIDEO

EC3000

EC3000 | 042099
Cordless chainsaw

Guide bar	25cm with gear
Chain/guide	1/4x1,1mm/58
Chain speed	11m/s
Lubrication system	Automatic pump
Weight	1.9 Kg



PRO

EC3005 | 042105
Battery 20V
per EC3000



PRO

EC3010 | 042112
Charger 20V
per EC3000





2STROKE

EASY
START

PB4320 | 066606

Gasoline brush cutter

Engine Displacement	43cc
Max Power	1.8Hp
Load speed	6500rpm
Fuel Tank	1200ml
Shaft Diameter	26mm
Weight	7.4kg

INCLUDE: Harness, Semi-automatic trimmer head, 3T metal disc, Service tools, Fuel tank



2STROKE

EASY
START

PB5221 | 033783

Gasoline brush cutter

Engine Displacement	52cc
Max Power	2.0Hp
Load speed	6500rpm
Fuel Tank	1200ml
Shaft Diameter	28mm
Weight	7.6kg

INCLUDE: Double harness, Semi-automatic trimmer head, 3T metal disc, Service tools, Fuel tank



2STROKE

EASY
START

PB5228 | 078906

Gasoline brush cutter

Engine Displacement	52cc
Max Power	2.0Hp
Load speed	6500rpm
Fuel Tank	1200ml
Shaft Diameter	28mm
Split shaft	
Weight	7.6kg

INCLUDE: Double harness, Semi-automatic trimmer head, 3T metal disc, Service tools, Fuel tank carburante



2STROKE

EASY
START

PB6210 | 024255
Gasoline brush cutter

Engine Displacement	62cc
Max Power	3.0Hp
Load speed	7500rpm
Fuel Tank	1200ml
Shaft Diameter	28mm
Weight	7.9kg

INCLUDE: Double harness, 3T metal disc, aluminium trimmet head with 4 exits, Service tools, Fuel tank

VIDEO



PB6210



2STROKE

EASY
START

PB6310 | 024248
Brush cutter

Engine Displacement	63cc
Max Power	3.0Hp
Load speed	7500rpm
Fuel Tank	1200ml
Shaft Diameter	28mm
With anti-vibration system	
Weight	9.0Kg

INCLUDE: Reinforced double harness, 40T metal disc, aluminium trimmet head with 4 exits, Service tools, Fuel tank



2STROKE

EASY
START

PB7230 | 066484
Gasoline brush cutter

Engine Displacement	72cc
Max Power	3.8Hp
Load speed	10000rpm
Fuel Tank	1200ml
Shaft Diameter	28mm

With anti-vibration steering system

Weight	8.6kg
--------	-------

INCLUDE: Reinforced double harness, 40C metal disc, aluminium trimmet head with 4 exits, Service tools, Fuel tank



PRO 2STROKE

EASY
START

ENGINE EUROS
UP TO
-40%
LESS EXHAUST GAS
CONSUMPTION

PB5450 | 033967
Gasoline brush cutter

Engine Displacement	52cc
Max Power	2.0Hp
Load speed	10000rpm
Fuel Tank	900ml
Shaft Diameter	28mm
Weight	7.6kg

INCLUDE: Reinforced double harness, 255/3T metal disc, Semi-automatic Head with 4 exits, Service tools, Fuel tank



PB1000 | 015611
Tiller for brush cutter

25cm for axis 28mm



FT2000 | 014300

Fuel tank
Metal construction 20lt



2STROKE

EASY
START

ENGINE EUROS
UP TO
-40%
LESS EXHAUST GAS
CONSUMPTION

PRO

PB5600 | 033790

Gasoline brush cutter

Engine Displacement	52cc
Max Power	2.3Hp
Load speed	10000rpm
Fuel Tank	900ml
Shaft Diameter	28mm
With anti-vibration system	
Weight	9.2Kg

INCLUDE: Reinforced double harness, 255/3T metal disc, Semi-automatic Head with 4 exits, Service tools, Fuel tank



2STROKE

EASY
START

ENGINE EUROS
UP TO
-40%
LESS EXHAUST GAS
CONSUMPTION

PRO

PB7500 | 033813

Gasoline brush cutter

Engine Displacement	63.3cc
Max Power	3.0Hp
Load speed	7500rpm
Fuel Tank	1200ml
Shaft Diameter	28mm
Weight	8.8kg

INCLUDE: Reinforced double harness, 255/3T metal disc, Semi-automatic Head with 4 exits, Service tools, Fuel tank



2STROKE

EASY
START

ENGINE EUROS
UP TO
-40%
LESS EXHAUST GAS
CONSUMPTION

PRO

PB7700 | 033806

Gasoline brush cutter

Engine Displacement	63.3cc
Max Power	3.0Hp
Load speed	7500rpm
Fuel Tank	1200ml
Shaft Diameter	28mm
With anti-vibration system	
Weight	10.8kg

INCLUDE: Reinforced double harness, 255/3T metal disc, Semi-automatic Head with 4 exits, Service tools, Fuel tank



2STROKE

EASY
START

ENGINE EUROS
UP TO
-40%
LESS EXHAUST GAS
CONSUMPTION

PRO

PS5105 | 036500

Multi-functional tool 4 in 1

Engine Displacement	25.4cc
Max Power	1Hp
Load speed	10000rpm
Fuel Tank	700ml
Albero divisibile	
Shaft Diameter	26mm
Length of scissors	395mm
Guide bar	25cm
Blade with gear	
Chain/guide	1/4", 1.1mm /56
Total length	2.2m
Weight	11.3kg

INCLUDE: Double harness, Trimmer head, 3T metal disc, Service tools, Fuel tank



PS5105EXT | 036524

Extension pole

For PS2500, PS2600
26mmx76cm



PRO



ET6100 | 034278
Electric grass trimmer

Power	550W
Load speed	8800rpm
Total length	98-120cm
Diameter of Trimmer Line	320mm
Weight	3.85Kg

INCLUDE: Automatic trimmer head, Service tools

PRO

EB1010 | 053033
Electric brush cutter

Power	1000W
Load speed	7500rpm
Max. cutting width	350mm
Split shaft	
Shaft Diameter	26mm
Weight	5.6Kg



INCLUDE: Harness, 3T metal disc, Trimmer head, Service tools



PRO

NEW

EB1012 | 084587
Electric brush cutter

Power	1400W
Load speed	7500rpm
Max. cutting width	380mm
Split shaft	
Shaft Diameter	26mm
Protection against overheating	
Weight	4.6Kg



INCLUDE: Bicycle handle, 3T blade, spool, Aluminum tube



2STROKE



PS5170 | 054115
Gasoline multitool 4 in 1

Engine Displacement	51.7cc
Max Power	2.1Hp
Load speed	8500rpm
Fuel tank	1200ml
Shaft Diameter	26mm
Hedge Trimmer cutting length	39,5cm
Blade	25cm
Chain/guide	3/8"LP 1.3mm/39
Extension Shaft	1m
Length without extension	2,2m
Weight	13Kg

INCLUDE: Nylon Head, 3T Blade, Double Belt



PRO

PS2600 | 029113
Gasoline pole saw

Engine Displacement	25.4cc
Max Power	1.1Hp
Blade with gear	
Load speed	10000rpm
Chain/guide	1/4" 1.1mm/58
Guide bar	25cm
Fuel tank	700ml
Length chainsaw	2m
Weight	5.3Kg



INCLUDE: Bar, Chain, Belt, Service tools, Fuel tank

PS2500EXT | 012801
Pole extension

Per PS2600 100cm, Weight 0.35Kg



PRO

ES7250 | 034339
Electric pole saw

Power	750W
Load speed	6000rpm
Blade with gear	
Chain/guide	3/8"LP, 1.3mm /33
Guide bar	20cm
Hedge Trimmer cutting length	2.0-2.8m
Angle Adjustable Position	0, 15, 30°
Weight	3.0Kg



INCLUDE: Belt, Bar, Chain, Lubrication oil



2STROKE



PC3100 | 029052
Gasoline chainsaw

Engine Displacement	25cc
Max Power	1.3Hp
Lubrication system	Automatic pump
Load speed	3200rpm
Fuel tank	230ml
Guide bar	25cm
Blade with gear	
Chain/guide	3/8"LP, 1.3mm/40
Oil Chain Tank	160ml
Weight	2.9Kg



INCLUDE: Bar, Chain, Harness, Service tools, Fuel tank

ENGINE EURO5 UP TO **-40%** LESS EXHAUST GAS CONSUMPTION

2STROKE

EASY
START

PRO



PC2525 | 068228
Gasoline chainsaw

Engine Displacement	25cc
Max Power	1.4Hp
Lubrication system	Automatic pump
Load speed	3400rpm
Fuel tank	190ml
Guide bar	25cm
Blade with gear	
Chain/guide	1/4", 1.1mm/56
Oil Chain Tank	140ml
Weight	2.5Kg



INCLUDE: Bar, Chain, Harness, Service tools, Fuel tank

2STROKE

ENGINE EURO5 UP TO **-40%** LESS EXHAUST GAS CONSUMPTION

EASY
START

PRO



PC3530 | 030652
Gasoline chainsaw

Engine Displacement	25.4cc
Max Power	1.35Hp
Carving blade	25cm
Load speed	3000rpm
Fuel tank	230ml
Guide bar	25cm
Blade with gear	
Chain/guide	1/4" 1.1mm/60
Oil Chain Tank	160ml
Weight	2.9Kg

2STROKE



PC4600 | 029069
Gasoline chainsaw

Engine Displacement	45cc
Max Power	2.45Hp
Lubrication system	Automatic pump
Load speed	3200rpm
Fuel tank	550ml
Guide bar	45cm
Blade with gear	
Chain/guide	0.325" 1.3mm/72
Oil Chain Tank	260ml
Weight	4.5Kg



2STROKE



PC5600 | 029076
Gasoline chainsaw

Engine Displacement	50cc
Max Power	2.6Hp
Lubrication system	Automatic pump
Load speed	3200rpm
Fuel tank	550ml
Guide bar	50cm
Blade with gear	
Chain/guide	0.325" 1.5mm/76
Oil Chain Tank	260ml
Weight	5.0Kg



INCLUDE: Bar, Chain, Service tools, Fuel tank

2STROKE



PC6700 | 029083
Gasoline chainsaw

Engine Displacement	56.3cc
Max Power	3.8Hp
Lubrication system	Automatic pump
Load speed	3200rpm
Fuel tank	550ml
Guide bar	55cm
Blade with gear	
Chain/guide	0.325" 1.5mm/84
Oil Chain Tank	260ml
Weight	5.4Kg



INCLUDE: Bar, Chain, Service tools, Fuel tank

ENGINE EURO5
UP TO
-40%
LESS EXHAUST GAS
CONSUMPTION

2STROKE

EASY
START

PRO



PC4100 | 036456

Gasoline chain saw

Engine Displacement	39.6cc
Max Power	2.0Hp
Lubrication system	Automatic pump
Load speed	3700rpm
Fuel tank	410ml
Guide bar	40cm
Blade with gear	
Chain/guide	0.325", 1.3mm/56
Oil Chain Tank	140ml
Weight	4.3Kg



INCLUDE: Bar, Chain, Service tools, Fuel tank

ENGINE EURO5
UP TO
-40%
LESS EXHAUST GAS
CONSUMPTION

2STROKE

PRO



PC4610 | 036463

Gasoline chain saw

Engine Displacement	39.6cc
Max Power	2.0Hp
Lubrication system	Automatic pump
Load speed	3700rpm
Fuel tank	520ml
Guide bar	45cm
Blade with gear	
Chain/guide	0.325", 1.3mm/56
Oil Chain Tank	260ml
Weight	4.9Kg



INCLUDE: Bar, Chain, Service tools, Fuel tank

ENGINE EURO5
UP TO
-40%
LESS EXHAUST GAS
CONSUMPTION

2STROKE

PRO



PC5610 | 036470

Gasoline chain saw

Engine Displacement	54.6cc
Max Power	3.5Hp
Lubrication system	Automatic pump
Load speed	3700rpm
Fuel tank	450ml
Guide bar	50cm
Blade with gear	
Chain/guide	0.325", 1.5mm/78
Oil Chain Tank	260ml
Weight	5.2Kg

EASY
START



INCLUDE: Bar, Chain, Service tools, Fuel tank



EC2035 | 042600

Gasoline chain saw

Power	1800W
Guide bar	35cm
Load speed	7500rpm
Chain speed	14m/s
Blade with gear	
Chain/guide	3/8LP", 1,3mm/52
Oil Chain Tank	120ml
Weight	3.8Kg

INCLUDE: Bar, Chain, Service tools, Fuel tank



PRO

EC2350 | 034322

Electric chain

Power	2400W
Guide bar	45cm
Load speed	7600rpm
Chain speed	14m/s
Blade with gear	
Chain/guide	3/8LP", 1,3mm/62
Oil Chain Tank	250ml
Weight	4.5Kg

INCLUDE: Bar, Chain, Service tools



PRO

ES2310 | 036289

Electric chain grinder

Power	230W
Disc Ø	145mm
Working light	



ES3010 | 049241

Electric chain grinder

Power	220W
Disc Ø	100mm

CS1500 | 014423

Cutting saw
standdel legno

Maximum weight 150Kg



IRON MESH

PB970 | 031833

Face shield visor





EM3221 | 084365
Electric lawnmower

Power	1200W
Cutting width	32cm
Cutting height	25-65mm (3 positions)
Bucket Capacity	25Lt
Wheel size front/rear	Ø 140/140mm
Frame	Plastic
Weight	7kg



EM3220 | 066361
Electric lawnmower

Power	1200W
Cutting width	32cm
Cutting height	25-65mm (3 positions)
Bucket Capacity	25Lt
Wheel size front/rear	Ø 140/140mm
Frame	Plastic
Weight	7kg



PRO

EM3410 | 032342
Electric lawnmower

Power	1400W
Cutting width	34cm
Cutting height	25-65mm (5 positions)
Bucket Capacity	35Lt
Wheel size front/rear	Ø 140/140mm
Frame	Plastic
Weight	9.3kg



PRO

VIDEO



EM4010

EM4010 | 032359
Electric lawnmower

Power	1600W
Cutting width	38cm
Cutting height	20-70mm (5 positions)
Bucket Capacity	40Lt
Wheel size front/rear	Ø 160/200mm
Frame	Plastic
Weight	9.8kg



PRO

INDUCTION MOTOR

EM4016 | 084389
Electric lawnmower

Power	1600W
Cutting width	38cm
Cutting height	25-75mm (5 positions)
Bucket Capacity	40Lt
Wheel size front/rear	Ø 150/200mm
Frame	Plastic
Weight	17.6kg



PRO

EM4021 | 084372
Electric lawnmower

Power	1800W
Cutting width	43cm
Cutting height	25-75mm (5 positions)
Bucket Capacity	45Lt
Wheel size front/rear	Ø 178/255mm
Frame	Plastic
Weight	12.6kg

PRO



EM4020 | 032366

Electric lawnmower

Power	1800W
Cutting width	42cm
Cutting height	25-75mm (11 positions)
Bucket Capacity	50Lt
Wheel size front/rear	Ø 170/210mm
Frame	Plastic
Weight	13.0Kg

PRO

4-STROKE

ENGINE EURO5
UP TO
-40%
LESS EXHAUST GAS
CONSUMPTION



PM5460 | 084075

Push gasoline lawnmower

Engine Displacement	149cc
Max Power	3Hp
Load speed	3000rpm
Cutting width	460mm
Cutting height	25-75mm (7 positions)
Cutting Functions: 3 in 1 (Collecting, Mulching, Rear-discharge)	
Frame	Metal
Start System	Manual
Fuel Capacity	0.9Lt
Oli Type/Capacity	10W-30/0.5Lt
Bucket Capacity	60Lt
Wheel size front/rear	Ø 175/250mm
Weight	26Kg

PRO

4-STROKE

ENGINE EURO5
UP TO
-40%
LESS EXHAUST GAS
CONSUMPTION



PM5465 | 084082

Push gasoline lawnmower

Engine Displacement	147cc
Max Power	3Hp
Load speed	3000rpm
Cutting width	460mm
Cutting height	25-75mm (7 positions)
Cutting Functions: 3 in 1 (Collecting, Mulching, Rear-discharge)	
Frame	Metal
Start System	Manual
Fuel Capacity	0.9Lt
Oli Type/Capacity	10W-30/0.5Lt
Bucket Capacity	60Lt
Wheel size front/rear	Ø 180/250mm
Weight	26Kg

PRO
4-STROKE

ENGINE EURO5
UP TO
-40%
LESS EXHAUST GAS
CONSUMPTION



PM4830 | 032397

Push gasoline lawnmower

Engine Displacement	145cc
Max Power	3.5Hp
Load speed	3600rpm
Cutting width	460mm
Cutting height	25-75mm (7 positions)
Cutting Functions: 4 in 1 (Collecting, Mulching, Side-discharge, Rear-discharge)	
Frame	Metal
Start System	Manual
Fuel Capacity	1Lt
Oli Type/Capacity	10W30/0.5Lt
Basket volume	65Lt
Wheel size front/rear	Ø 180/230mm
Weight	26Kg

PRO
4-STROKE

ENGINE EURO5
UP TO
-40%
LESS EXHAUST GAS
CONSUMPTION



PM5510 | 084099

Push gasoline lawnmower

Engine Displacement	169cc
Max Power	5Hp
Load speed	3000rpm
Cutting width	510mm
Cutting height	25-75mm (7 positions)
Cutting Functions: 4 in 1 (Collecting, Mulching, Side-discharge, Rear-discharge)	
Frame	Metal
Start System	Manual
Fuel Capacity	0.9Lt
Oli Type/Capacity	10W-30/0.5Lt
Basket volume	60Lt
Wheel size front/rear	Ø 180/250mm
Weight	30Kg

ENGINE EURO5
UP TO
-40%
LESS EXHAUST GAS
CONSUMPTION

PRO
4-STROKE



PM5810 | 032410

Push gasoline lawnmower

Engine Displacement	199cc
Max Power	6.5Hp
Load speed	3600rpm
Cutting width	530mm
Cutting height	25-75mm (6 positions)
Cutting Functions: 4 in 1 (Collecting, Mulching, Side-discharge, Rear-discharge)	
Start System	Manual
Fuel Capacity	1Lt
Oli Type/Capacity	10W30/0.6Lt
Basket volume	65Lt
Wheel size front/rear	Ø 200/280mm
Weight	39Kg

ENGINE EURO5
UP TO
-40%
LESS EXHAUST GAS
CONSUMPTION

PRO

4STROKE



NEW

PM5530 | 084105

Self propelled gasoline lawnmover

Engine Displacement	196cc
Max Power	6.5Hp
Load speed	3000rpm
Cutting width	530mm
Cutting height	30-80 (8 positions)
Cutting Functions: 4 in 1 (Collecting, Mulching, Side-discharge, Rear-discharge)	
Frame	Metal
Start System	Manual
Fuel Capacity	0,9Lt
Oli Type/Capacity	10W-30/0,5Lt
Bucket Capacity	60Lt
Wheel size front/rear	Ø 180/230mm
Weight	26Kg

ENGINE EURO5
UP TO
-40%
LESS EXHAUST GAS
CONSUMPTION

PRO

4STROKE



NEW

PM5560 | 084112

Self propelled gasoline lawnmover

Engine Displacement	196cc
Max Power	6.5Hp
Load speed	3000rpm
Cutting width	560mm
Cutting height	30-80 (8 positions)
Cutting Functions: 4 in 1 (Collecting, Mulching, Side-discharge, Rear-discharge)	
Frame	Metal
Start System	Manual
Fuel Capacity	1Lt
Oli Type/Capacity	10W-30/0,5Lt
Basket volume	60Lt
Bucket Capacity	Ø 200/250mm
Weight	35,5Kg

4STROKE

PRO



PB8600 | 074779

Self-propelled gasoline grass chipper

Engine Displacement	6,5Hp
Start System	Manual
Transmission Belt for blades/Gears for movement	
Speed	2 forwards + 1 backwards
Working width	60cm
Cutting drum speed	3200rpm
Number of blades	48 pcs (16x3)
Knife Type	Flail blade
Fuel tank	3,6L
Oil tank	0,5L
Maximum working speed	4,4km/h
Rear wheel	Ø 300mm
Adjustable distance of the handle from the ground: (Maximum 80cm)	
Weight	94Kg

4STROKE

PRO



NEW

PB8900 | 085744

Self-propelled gasoline grass chipper

Engine Displacement	6,5Hp
Start System	Manual
Transmission Belt for blades/Gears for movement	
Speed	2 forwards + 1 backwards
Working width	90cm
Cutting drum speed	2600rpm
Number of blades	46 pcs (23x2)
Knife Type	Flail blade
Fuel tank	6,8L
Oil tank	1,1L
Maximum working speed	2,4km/h
Rear wheel	Ø 355mm
Adjustable distance of the handle from the ground: (Maximum 80cm)	
Weight	175Kg

4STROKE

PRO

GS8600 | 029168

Gasoline chipper shredder

Engine Displacement	196cc
Power	6,5Hp
Starting system	Manual
Chipping Diameter	76mm
Blade Speed	2800rpm
Blade	2pcs
Weight	85Kg



4STROKE

PRO

GS8700 | 069478

Gasoline chipper shredder

Engine Displacement	212cc
Power	7Hp
Starting system	Manual
Chipping Diameter	60mm
Cutting length	50-100mm
Blade Speed	400rpm
Blade	6pcs
Weight	110Kg



4STROKE

PRO

GS9600 | 029175

Gasoline chipper shredder

Engine Displacement	420cc
Power	15Hp
Starting system	Starter/Manual
Chipping Diameter	120mm
Blade Speed	2800rpm
Blade	2pcs
With towing kit	
Weight	170Kg



PRO

ES2510 | 053057

Blade shredder

Power	2500W
Cutting capacity	40mm
Load speed	5000rpm
Weight	10.25Kg



SM9800 | 043034

Gasoline skythe mower

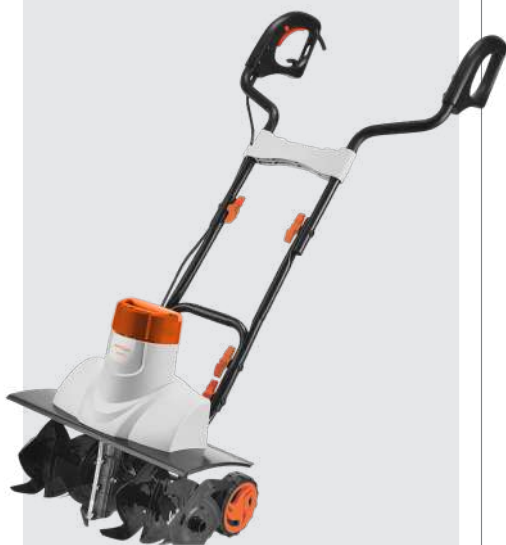
Engine Displacement	196cc
Power	6.5Hp
Speed	1 forwards + 1 backwards
Starting system	Manual
Transmission	Belt
Working width	100cm
Adjusted Height	1-8cm
Weight	158Kg



PRO

NEW

2STROKE



MB2120 | 084594

Electric tiller

Power	1500W
Speed	1 forwards
Transmission	Gears
Working Width	45cm
Working Depth	18cm
Blades/Knives	12+12
Handlebar/Steering	by hand
Weight	12.9Kg



MB2510 | 033080

Electric tiller

Engine Displacement	52cc
Power	2.2Hp
Speed	1 forwards
Transmission	Gears
Working Width	30cm
Working Depth	10cm
Starting system	Manual
Blades/Knives	8+8
Fuel tank	1.2Lt
Handlebar/Steering	Foldable
Weight	14Kg

2STROKE



MB2620 | 066507

Electric tiller

Engine Displacement	62cc
Power	2.8Hp
Speed	1 forwards
Transmission	Gears
Working Width	40cm
Working Depth	20cm
Starting system	Manual
Blades/Knives	12+12
Fuel tank	1.2Lt
Handlebar/Steering	Foldable
Weight	16.5Kg

4STROKE

MB5005 | 053736

Gasoline tiller

Engine Displacement	139cc
Power	4Hp
Speed	1 forwards
Starting system	Manual
Transmission	Belt drive
Working Width	36/60cm
Max. Working Depth	26cm
Depth Adjustment	3 positions
Knives	12+12
Handlebar/Steering	Foldable
Weight	32Kg



12+12
BLADES

4STROKE

MB5800 | 078548

Gasoline tiller

Engine Displacement	208cc
Power	7Hp
Speed	1 forwards + 1 backwards
Starting system	Manual
Transmission	Belt drive
Working Width	36/60cm
Max. Working Depth	26cm
Depth Adjustment	3 positions
Knives	12+12
Air filter	
Handlebar	Adjustable / Foldable
Max. Working Depth	Ø 260mm
Weight	72Kg



12+12
BLADES
INCLUDED

4STROKE

MB6000 | 000495

Motor cultivator

Engine Displacement	196cc
Power	6.5Hp
Speed	2 forwards + 1 backwards
Starting system	Manual
Transmission	Belt drive
Working Width	85cm
Max. Working Depth	25cm
Depth Adjustment	3 positions
Knives	12+12
Air filter	
Handlebar	Adjustable / Foldable
Max. Working Depth	Ø 260mm
Weight	72Kg



12+12
BLADES

INCLUDED

4STROKE

MB7000Classic | 011736

Motor cultivator

Engine Displacement	212cc
Power	7Hp
Speed	2 forwards + 1 backwards
Starting system	Manual
Transmission	Gears
Working Width	90/100cm
Max. Working Depth	25cm
Depth Adjustment	3 positions
Knives	12+12
Air filter	
Handlebar	Adjustable / Foldable
Max. Working Depth	Ø400mm
Weight	86Kg



4STROKE

MB7100 | 036302

Motor cultivator

Engine Displacement	212cc
Power	7,5Hp
Speed	3 forwards + 1 backwards
Starting system	Manual
Transmission	Belt drive
Working Width	90/100cm
Max. Working Depth	30cm
Depth Adjustment	3 positions
Knives	12+12
Air filter	
Handlebar	Adjustable / Foldable
Max. Working Depth	Ø 400mm
Weight	90Kg



PRO



MB6510 | 053743

Gasoline cultivator

Engine Displacement	212cc
Power	7Hp
Speed	3 forwards + 1 backwards
Starting system	Manual
Transmission	gears
Working Width	58cm (with blades)
Max. Working Depth	30cm
Depth Adjustment	3 positions
Lame	12+12
Air filter	
Handlebar	Adjustable / Foldable
Max. Working Depth	Ø 400mm
Weight	73Kg



4STROKE PRO



MB6512 | 070771

Ditching blades

for MB6510



MB6511 | 070764

2 pcs set metallic

wheels Ø 320mm

For MB6510



4STROKE

MB9000Classic | 011729

Diesel tiller

Engine Displacement	196cc
Power	10Hp
Speeds	2 forwards 1 backwards
Starting system	Manual
Transmission	gears
Working Width	90/110cm
Max. Working Depth	30cm
Depth Adjustment	3 posizioni
Blades	16+16
Air filter	
Handlebar	Adjustable / Foldable
Max. Working Depth	Ø 550mm
Weight	144Kg



4STROKE

PRO

MB9005 | 033288

Diesel tiller

Engine Displacement	418cc
Power	10Hp
Speeds	2 forwards 1 backwards
Starting system	Manual
Transmission	gears
Working Width	90/110cm
Max. Working Depth	30cm
Depth Adjustment	3 posizioni
Blades	16+16
Air filter	
Handlebar	Adjustable / Foldable
Max. Working Depth	Ø 550mm
Weight	158Kg



INCLUDED



MB211 | 012719

Trailer 500Kg

For MB9000, MB9005

Total Size of Trailer	270x105x100cm
Usable Loading Space	120x80x30cm
Maximum Load Capacity	500Kg
Wheels	Ø 500mm
Weight	112Kg



MB138 | 012702

Potato digger
for tillers



MB137 | 012696

Adjustable plough
for tillers

PRO



MB9300 | 070740
Mini cultivator / tractor

Engine Displacement	389cc
Power	11Hp
Drive	4WD/2WD drive
Speeds	3 forwards 1 backwards
Starting system	Manual/recoil
Transmission	gears
Working Width	90/105cm
Working depth	15cm
Depth Adjustment	3 posizioni
Blades	16+16
Air filter	
Handlebar	Adjustable / Foldable
Max. Working Depth	Ø 400/Ø550mm
Weight	267Kg
With Rear mirror	
With ROPS rollover protection system	
With 1 set 4x8 & 5x12 Rubber wheel	
Con 1 set di ruote in ferro 19"	



PRO



MB9305 | 070801

Trailer for MB9300

Dimensions	120x80x25cm
Max load	300Kg
Wheels	Ø 500mm
Weight	75Kg

PRO



MB9303 | 070788

Single ditcher adjustable

(for MB9300)
30-50cm
12Kg

PRO



MB9304 | 070795

Double ditcher adjustable

(for MB9300)
100cm
20Kg

2STROKE



PD5230 | 043256

Auger

Engine Displacement	52cc
Power	2Hp
Fuel tank	1000ml
Speed	6500rpm
Accessories not included	
Weight	8.8Kg

2STROKE



PD6330 | 078203

Auger

Engine Displacement	62cc
Power	2.8Hp
Fuel tank	1200ml
Speed	9000rpm
Accessories not included	
Weight	9.1Kg

Auger drill per PD6330/PD5230

MODEL	CODE	DESCRIPTION
PD1150	043263	ø15x80cm
PD1200	043270	ø20x80cm
PD1250	043287	ø25x80cm
PD1300	043294	ø30x80cm



Auger drill per pd6330

MODEL	CODE	DESCRIPTION
PD1590	038092	ø15x80cm
PD2090	038108	ø20x80cm
PD2590	038115	ø25x80cm



3 Function:
Blower
Vaccum
Chipper



EB3500 | 020356

Electric blower

Power	3000W
Air speed	792 m³/h
Air volume	270Km/h
Load speed	15000rpm
Collection Bag	35Lt
Weight	3.1kg

EB3600 | 034285

Electric blower

Power	2600W
Air speed	720m³/h
Air volume	288Km/h
Load speed	15000rpm
Collection Bag	45Lt
Weight	4.1kg



2STROKE



BL2510 | 053378

Gasoline blower

Engine Displacement	25.4cc
Power	1Hp
Fuel tank	450ml
Speed	148Km/h
Air flow rate	720m³/h
Weight	5.5Kg

2STROKE



BL6005 | 078197

Gasoline blower shoulder carried

Engine Displacement	63cc
Power	3.5Hp
Fuel tank	450ml
Speed	280Km/h
Air flow rate	864m³/h
Weight	10.7Kg

SSF050 | 055679



SSF101 | 073970

Grafting tool



PRO

EH4510 | 053040
Electric hedge trimmer



Power	450W
Speed	3800spm
Tooth Space	28mm
Guide bar	500mm
Weight	2.15Kg

PRO

EH7750 | 043089
Hedge trimmer



Power	710W
Speed	3300spm
Tooth Space	24mm
Guide bar	710mm
Handle Rotary	-90°+90°
Weight	3.8Kg

Rotating handle

LASER CUT

PH2570 | 054108
Hedge trimmer



Engine Displacement	25,4cc
Power	1,2Hp
Speed	3000spm
Tooth Space	28mm
Guide bar	700mm
Handle Rotary	-90° +90°
Weight	5.8Kg

Rotating handle



Splitting axe
Carbon steel head

MODEL	CODE	HANDLE	WEIGHT
BSA1050	028338	35cm	650gr
BSA1100	028345	45cm	950gr
BSA1150	028352	71cm	1.7kg



SSF560 | 056485
Splitting maul
with wooden handle

Weight	2Kg
Length	90cm
Steel head	carbon



BSA1000 | 028321
Splitting axe

Weight	2.5Kg
Length	90cm
Fibre glass handle	
Carbon steel head	



SSF558 | 056478
Splitting maul
with wooden handle

Weight	3Kg
Length	90cm
Wooden handle	
Carbon steel head	



SSF277 | 054641
Gear function bypass loppe

Length	675-925mm
Blade	SK5
Teflon coated	
Cutting width	45mm



PRO



SSF519 | 036166
Telescopic gear
bypass lopper

Length	540-755mm
Blade	SK5
Teflon coated	
Cutting width	45mm



PRO



SSF521 | 036173
Hedge shear
w/telescopic handle

Length	530-745mm
Blade	SK5
Teflon coated	
Cutting width	45mm



PRO



SSF523 | 036180
Hedge shear w/ telescopic handle

Length	665-885mm
Blade	SK5
Teflon coated	
Cutting width	45mm

PRO

NP2105 | 034674

Automatic Pressure Pump

Power	800W
Maximum Flow Rate	3500Lt/h
Manometro max	38m
Outlet (Pipe Diameter)	1"
Tank Capacity	19Lt
Maximum Pressure	3Bar
Cable Length	1m
Weight	10.7Kg



PRO

NP2108 | 036043

Automatic Pressure Pump

Power	750W
Maximum Flow Rate	3000Lt/h
Manometro max	45m
Outlet (Pipe Diameter)	1"
Tank Capacity	24Lt
Maximum Pressure	5Bar
Cable Length	1.5m
Weight	17Kg



PRO

NP2115 | 034681

Automatic Pressure Pump

Power	1100W
Maximum Flow Rate	4100Lt/h
Manometro max	45m
Outlet (Pipe Diameter)	1"
Tank Capacity	24Lt
Maximum Pressure	5Bar
Cable Length	1.5m
Weight	16.5Kg



PRO

NP2150 | 081203

Water pressure pump

Power	1300W
Maximum Flow Rate	6000 Lt/h
Manometro max	53m
Outlet (Pipe Diameter)	1"
Maximum Pressure	5Bar
Display	LCD
Cable Length	1.5m
Weight	11.0Kg



PRO

NP2120 | 035152

Automatic Pressure Pump

Power	1100W
Maximum Flow Rate	4200Lt/h
Manometro max	45m
Outlet (Pipe Diameter)	1"
Maximum Pressure	4.5Bar
Cable Length	1m
Weight	9.2Kg



4-STROKE PRO

SP9800 | 042815

Gasoline pump

Engine Displacement	97cc
Power	2.5Hp
Maximum Flow Rate	170 lt/min
Manometro max	15m
Outlet (Pipe Diameter)	1.5"
Fuel tank	1Lt
Pump Type	Aluminum
Weight	9.8Kg



INCLUDE: 3 Hose Connectors

PRO

NP2085 | 049807
Electronic pressure switch

Starting pressure	1,5-6Bar
Degree of protection	IP65
Spout	1"x1"
Weight	1.2Kg



Suitable for use with pumps up to 1500W and pressure up to 6 bar

PRO

Water Pump

MODEL	NP2015	NP2025
CODE	036029	036036
Power	370W	750W
Maximum Flow Rate	2100Lt/h	2700Lt/h
Manometro max	40m	70m
Outlet (Pipe Diameter)	1"	
Water Temperature	90°C	
Impeller	Brass	
Pump Body Cast Iron		
Weight	4.5Kg	9.0Kg



PRO

NP2035 | 034636

Centrifugal pump

Power	800W
Maximum Flow Rate	3500 lt/h
Manometro max	38m
Outlet (Pipe Diameter)	1"
Water Temperature	40°C
Weight	5.9Kg



PRO

NP2095 | 036067

Multistage pump

Power	950W
Maximum Flow Rate	6600Lt/h
Manometro max	52m
Outlet Pipe Diameter	1"
Water Temperature	90°C
Impeller	Brass
Pump Body	Cast Iron
Weight	19.2Kg



PRO

NP2075 | 036050

Centrifugal pump high flow

Power	1100W
Maximum Flow Rate	24000lt/min
Manometro max	20m
Outlet Pipe Diameter	2"
Water Temperature	90 °C
Impeller	Brass
Pump Body	Cast Iron
Weight	19.0Kg



PRO

NP2065 | 069461

Centrifugal pump 2 stages

Power	1500W
Maximum Flow Rate	8400lt/min
Manometro max	50m
Water Temperature	90°C
Impeller	Brass
Pump Body Cast Iron	
Weight	23.5Kg



PRO

SP1210 | 038207

Water Pump

Power	80W
Manometro max	5m
Maximum Flow Rate	4000L/h
Shaft	1"
Pump Dimensions	13x10x23cm
Weight	0.8Kg



PRO



NP1160 | 024729

Water Pump

Volatge	12DCV
Maximum Flow Rate	4.180Lt/h
Manometro max	4m
Shaft	29mm
Pump Dimensions	16x6.5cm
Weight	0,25Kg

SP1500 | 011927

Metallic oil pump for barrel

Pump Body	110mm
Manometro max	4m
Maximum Flow Rate	22Lt/min
Weight	2.7Kg



PRO

NP1150 | 020004

Stainless submerible

Power	75W
Maximum Flow Rate	2.600Lt/h
Manometro max	2.6m
Shaft	1"
Weight	2.8Kg



PRO



NP1010 | 019862

Clean water submersible pump

Power	400W
Maximum Flow Rate	7000Lt/h
Manometro max	8m
Maximum Pump Submersion	7m
Outlet	1"/1-1/4"/1-1/2"
Maximum Particle Size	5mm
Cable Length	10m
Pump Dimensions	24x22x28cm
Weight	4.0Kg

PRO



NP1020 | 019879

Clean water submersible pump

Power	750W
Maximum Flow Rate	12500Lt/h
Manometro max	8.5m
Maximum Pump Submersion	7m
Outlet	1"/1-1/4"/1-1/2"
Maximum Particle Size	5mm
Cable Length	10m
Pump Dimensions	24x22x28cm
Weight	4.3Kg

PRO



NP1050 | 019909

Clean water stainless submersible inox pump

Power	550W
Maximum Flow Rate	8500Lt/h
Manometro max	7.5m
Maximum Pump Submersion	7m
Outlet	1"/1-1/4"/1-1/2"
Maximum Particle Size	5mm
Cable Length	10m
Pump Dimensions	15x15x32cm
Weight	5Kg

PRO



NP1070 | 019923

Clean water submersible pump with floter

Power	750W
Maximum Flow Rate	13000 L/h
Manometro max	8.5m
Maximum Pump Submersion	7m
Outlet	1"/1-1/4"/1-1/2"
Maximum Particle Size	5mm
Cable Length	10m
Pump Dimensions	24x16x38cm
Weight	5.0Kg



NP1115 | 070542

Submersible pump with floater

Power	550W
Maximum Flow Rate	17000 L/h
Manometro max	8.5m
Maximum Pump Submersion	7m
Outlet	1"/1-1/4"/1-1/2"
Maximum Particle Size	5mm
Cable Length	1mm
Pump Dimensions	10m
Weight	32x21x18cm
Weight	6.0Kg

PRO



NP1030 | 019886

Dirty water submersible pump

Power	550W
Maximum Flow Rate	10000Lt/h
Manometro max	7m
Maximum Pump Submersion	7m
Outlet	1"/1-1/4"/1-1/2"
Maximum Particle Size	35mm
Cable Length	10m
Pump Dimensions	23x17.5x33.5cm
Weight	5.0Kg

PRO



NP1040 | 019893

Dirty water submersible pump

Power	900W
Maximum Flow Rate	14000Lt/h
Manometro max	8.5m
Maximum Pump Submersion	7m
Outlet	1"/1-1/4"/1-1/2"
Maximum Particle Size	35mm
Cable Length	10m
Pump Dimensions	23x24x36cm
Weight	5.5Kg

PRO



NP1100 | 019954

Dirty water submersible pump

Power	1100W
Maximum Flow Rate	15500L/h
Manometro max	8.5m
Maximum Pump Submersion	7m
Outlet	1"/1-1/4"/1-1/2"
Maximum Particle Size	35mm
Cable Length	10m
Pump Dimensions	24x17x43
Weight	6.0Kg

PRO



NP1130 | 019985

Dirty water pump inox

Power	1300W
Maximum Flow Rate	25000L/h
Manometro max	11m
Maximum Pump Submersion	7m
Outlet	1"-1/2"/ 2"
Maximum Particle Size	40mm
Cable Length	10m
Pump Dimensions	22x23x40
Weight	7.6Kg

PRO



NP1060 | 019916
Dirty water stainless submersible pump

Power	1100W
Maximum Flow Rate	16500Lt/h
Manometrico max	10.5m
Maximum Pump Submersion	7m
Outlet	1"/1-1/4"/1-1/2"
Maximum Particle Size	35mm
Cable Length	10m
Pump Dimensions	22x18x42cm
Weight	7.5Kg

PRO



NP1080 | 019930
Dirty water submersible pump

Power	900W
Maximum Flow Rate	15500Lt/h
Manometrico max	8,5m
Maximum Pump Submersion	7m
Outlet	1"/1-1/4"/1-1/2"
Maximum Particle Size	35mm
Cable Length	10m
Pump Dimensions	24x17x43cm
Weight	5.5Kg

PRO



SP1115 | 078425
Dirty water submersible pump

Power	1100W
Maximum Flow Rate	15000Lt/h
Manometrico max	10m
Maximum Pump Submersion	7m
Outlet	2"
Cable Length	8m
Pump Dimensions	35x18x40cm
Weight	17.8Kg

PRO



SP1315 | 051848
Dirty water submersible pump

Power	1300W
Maximum Flow Rate	18000Lt/h
Manometrico max	12m
Maximum Pump Submersion	7m
Outlet	2"
Cable Length	8m
Pump Dimensions	42x37x20cm
Weight	18.0Kg

PRO



NP1180 | 030362
Submersive pump

Power	1000W
Maximum Flow Rate.	6000Lt/h
Manometrico max	45m
Maximum Pump Submersion	12m
Outlet	1"
Maximum Particle Size	1mm
Cable Length	15m
Pump Dimensions	15x15x53cm
Automatic 4-stage operation	
Flow sensor for automatic start and stop	
Dry-run protection (water shortage sensor)	
Weight	15.5Kg

PRO



NP1120 | 019978
Submersive pump inox

Power	1000W
Maximum Flow Rate	6500Lt/h
Manometrico max	40m
Maximum Pump Submersion	7
Outlet	1"
Maximum Particle Size	1mm
Cable Length	10m
Pump Dimensions	15x15x45cm
Weight	8.5Kg

PRO



NP1185 | 030614
Well inox pump

Power	1200W
Maximum Flow Rate.	5500Lt/h
Manometrico max	54m
Maximum Pump Submersion	7m
Outlet	1"/1-1/4"/1-1/2"
Maximum Particle Size	1.5mm
Cable Length	10m
Pump Dimensions	18x18x50cm
Weight	12Kg

PRO



NP1190 | 030621
Well inox pump

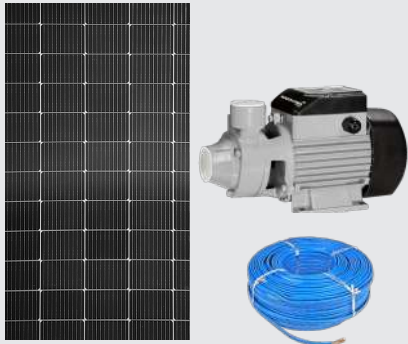
Power	900W
Maximum Flow Rate.	4500Lt/h
Manometrico max	60m
Maximum Pump Submersion	7m
Outlet	1"/1-1/4"/1-1/2"
Maximum Particle Size	1.0mm
Cable Length	20m
Pump Dimensions	18x18x50cm
Weight	11Kg

PRO



SP6200 | 015925
4 Inox submersible pump

Power	1.5Hp
Portata massima max	5400L/h
Manometrico max	96m
Maximum Pump Submersion	80m
Outlet	4"
Cable Length	20m
Control Box	
Pump Dimensions	112x13x10cm
Weight	16.5Kg



NP2200 | 080039
Photovoltaic peripheral pump

Power	210W
Voltage	24V
Manometro max	25m
Maximum Flow Rate	2000Lt/h
Maximum Pump Submersion	3m
Outlet	1"
Total panel power	450W
Panel dimensions	191x113x3cm
Panel weight	24Kg

INCLUDE: Panel, cable set black/red 10m, connection accessories



NP2220 | 080053
Photovoltaic well pump

Power	400W
Voltage	48V
Manometro max	55m
Maximum Flow Rate	3800Lt/h
Maximum Pump Submersion	18m
Outlet	1.25"
Total panel power	700W
Panel dimensions	153x113x3cm
Panel weight	20Kg

INCLUDE: Panel, cable set black/red 10m, connection accessories



NP2230 | 080107
Photovoltaic well pump

Power	700W
Voltage	96V
Manometro max	95m
Maximum Flow Rate	3800Lt/h
Maximum Pump Submersion	18m
Outlet	1.25"
Total panel power	1650W
Panel dimensions	228x113x3cm
Panel weight	3x28Kg

INCLUDE: Panel, cable set black/red 40m, pump cable 20m, connection parts, support set



ENGINE EUROS UP TO -40% LESS EXHAUST GAS CONSUMPTION

NS2640 | 038153
Gasoline sprayer

Engine Displacement	26cc
Power	1Hp
Operating Pressure	25Bar
Flow Rate	5-8Lt/min
Fuel Tank Capacity	0.65Lt
Tank Capacity	15Lt
Weight	9Kg

PRO



2 STROKE

NS2635 | 032854
2 Stroke backpack gasoline sprayer

Engine Displacement	26cc
Power	1Hp
Operating Pressure	25Bar
Flow Rate	5-8Lt/min
Fuel Tank Capacity	0.65Lt
Tank Capacity	15Lt
Weight	9Kg

3 Different nozzles



NS2631 | 035992
Battery sprayer

Voltage	6V
Tank Capacity	5+1L
Maximum autonomy	up to 40h
Weight	11,5Kg

PRO



NS2520 | 053569
Power Sprayer

Pressure	21-45Bar
Flow Rate	15-22lt/min
Load speed	1200rpm
Pump Type	Plunger pump
Pistons	3x22mm
Weight	7.1Kg

PRO



NS3610 | 042501
Power sprayer

Pressure	21-45B
Flow Rate	30-45lt/min
Load speed	1200rpm
Pump Type	Plunger pump
Pistons	3x30mm
Weight	9Kg

PRO

2STROKE



NS2610 | 032892

2 Stroke sprayer

Engine Displacement	26cc
Power	1Hp
Maximum pressure	15-25Bar
Flow rate	3-8lt/min
Fuel tank capacity	0.65Lt
Weight	9Kg

INCLUDE: 20m hose and 60cm spray gun



2STROKE



NS5210 | 032908

2stroke gasoline sprayer

Engine Displacement	26cc
Power	1Hp
Maximum pressure	15-25Bar
Flow Rate	3-8lt/min
Hose Length	30m
Tank Capacity	50Lt
Fuel Capacity	0.65Lt
Weight	32.9Kg

INCLUDE: Adjustable spray lance 85cm with brass head, detachable lance with 3 fixed non-adjustable nozzles (135cm long, 75cm without extension), wheels



High Pressure Spray Hose

MODEL	NS1050	NS1100
CODE	043041	043058
Diameter	8,5mm	
Maximum Pressure	120Bar	
Length	50m	100m

4STROKE



NS4010 | 032861

Gasoline sprayer

Engine Displacement	196cc
Power	6.5Hp
Maximum pressure	25-40Bar
Flow Rate	14-22lt/min
Pump Type	Plunger pump
Fuel Capacity	3.6Lt
Weight	24Kg

INCLUDE: Suction and return pipes, suction filter, anti-vibration mounts, oil sensor

VIDEO



NS4010



4STROKE



NS4510 | 032885

Gasoline Sprayer

Engine Displacement	196cc
Power	6.5Hp
Operating Pressure	25-35Bar
Flow Rate	30-45ltmin
Pump Type	Plunger pump
Fuel Capacity	3.6Lt
Rubber band and lumen	30m
Weight	44Kg

INCLUDE: Hose reel, 30m hose, and 60cm spray gun



NS1619 | 077992

Knapsack battery sprayer

Battery	12V 8Ah
Capacity	16Lt
Pressure	6.8Bar
Liquid supply	4lt/min
Weight	4.95Kg

INCLUDE: 4 spare parts nozzle, Pump handle

4STROKE

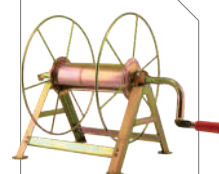


NS6200 | 025276

4-Stroke gasoline sprayer 196cc

Engine Displacement	196cc
Power	6.5Hp
Maximum pressure	40Bar
Flow rate	36lt/min
Pump Type	Plunger pump
Hose Length	30m
Tank Capacity	160Lt
Weight	45Kg

INCLUDE: Wheels, Hose Reel, Hose, 3 Pistons Brass Pump



NS100 | 010319

Hose reel
Up to 100m hose



NS5000 | 010203

Pressure sprayer
Tank Capacity | 5Lt